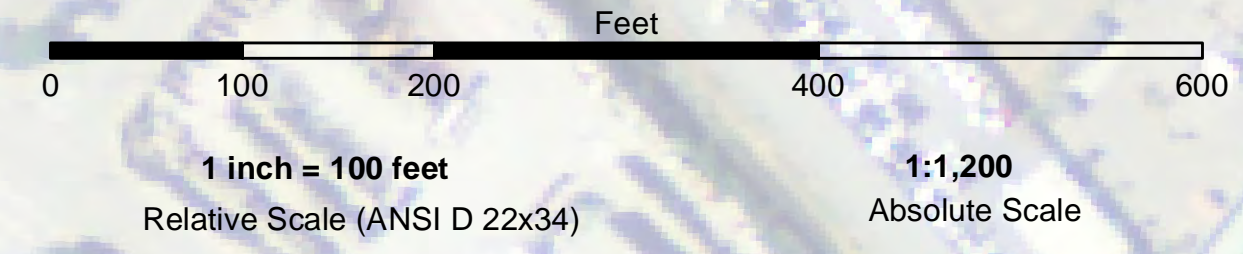


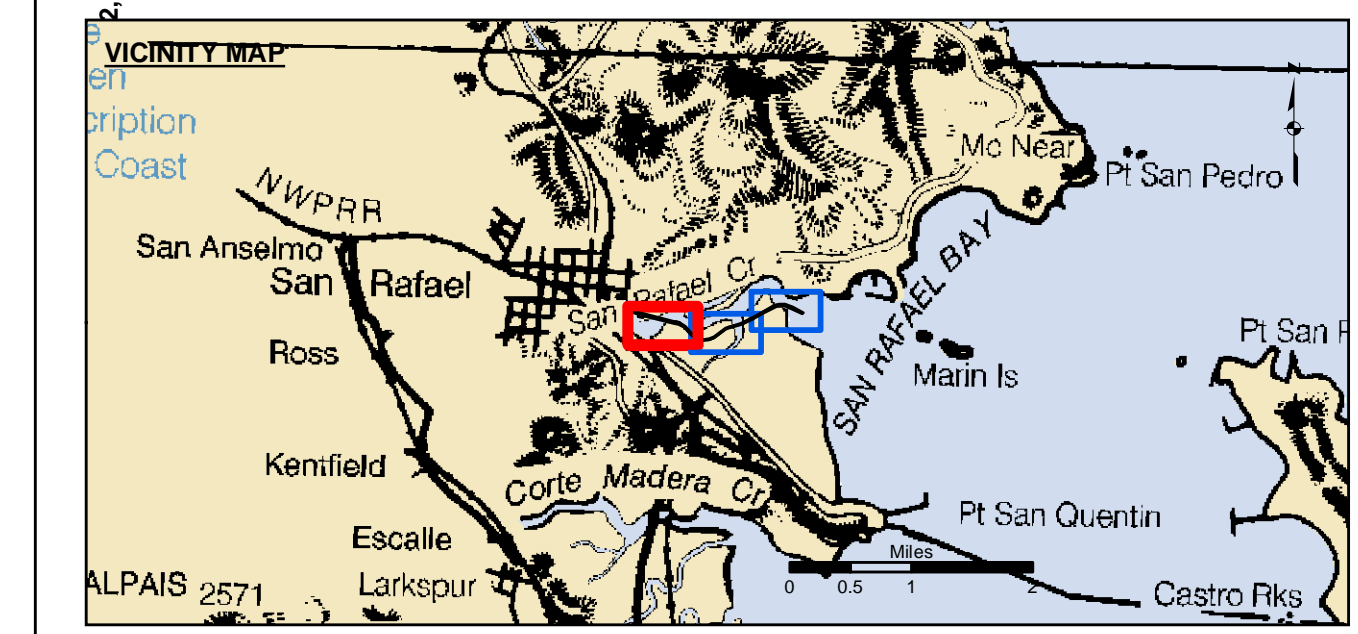
PRELIMINARY ISSUE
THIS PLAN ISSUED FOR
ADVANCE INFORMATION ONLY



NAD 83 CENTERLINE ANGLE POINTS		
Δ PT	X	Y
C1	5987089.37	2181692.15
C2	5986334.07	2182035.55
C3	5986088.27	2182054.45
C4	5985885.57	2181993.85
C5	5985380.77	2181729.75
C6	5984935.97	2181458.25
C7	5984421.07	2181213.45
C8	5983862.47	2181058.95
C9	5983735.07	2181010.85
C10	5983242.97	2180634.65
C11	5983023.37	2180542.35
C12	5982759.17	2180513.25
C13	5982475.57	2180605.75
C14	5982265.37	2180760.35
C15	5981973.07	2181089.55
C16	5981896.67	2181147.35
C17	5981723.17	2181235.75
C18	5981476.77	2181276.25
C19	5980172.77	2181612.05
C20	5979679.07	2181750.05

NAD 83 CHANNEL ANGLE POINTS		
Δ PT	X	Y
1	5987101.87	2181719.45
2	5986637.57	2181930.55
3	5986341.67	2182065.05
4	5986084.97	2182084.85
5	5985874.27	2182021.75
6	5985365.97	2181755.85
7	5984921.77	2181484.65
8	5984410.57	2181241.65
9	5983853.17	2181087.55
10	5983720.27	2181037.35
11	5983227.77	2180660.75
12	5983015.77	2180571.65
13	5982762.27	2180543.75
14	5982489.47	2180632.75
15	5982285.67	2180782.65
16	5981993.57	2181111.65
17	5981912.57	2181172.85
18	5981732.57	2181264.65
19	5981482.97	2181305.55
20	5980180.57	2181641.55
21	5979689.27	2181778.35
22	5979668.87	2181721.75

NAD 83 CHANNEL ANGLE POINTS		
Δ PT	X	Y
23	5979972.37	2181637.25
24	5979945.57	2181540.95
25	5980138.27	2181487.25
26	5980165.07	2181583.65
27	5981470.57	2181246.85
28	5981713.67	2181206.95
29	5981880.67	2181121.75
30	5981952.57	2181067.35
31	5982244.97	2180738.05
32	5982461.67	2180578.65
33	5982755.97	2180482.65
34	5983030.97	2180512.95
35	5983258.17	2180608.45
36	5983749.77	2180984.35
37	5983871.87	2181030.45
38	5984431.57	2181185.15
39	5984950.27	2181431.85
40	5985395.57	2181703.65
41	5985896.97	2181965.95
42	5986091.47	2182024.15
43	5986326.57	2182006.05
44	5987076.97	2181664.85



Federal Navigation Channel	Beacon, General	Contours
Shoaling Area	Obstruction Point	
Placement Area	Navigation Buoy	-6
Anchorage Area	Navigation Buoy	-5
Wreck Area	Shoalest Sounding*	-4
Submerged Wreck		-3
Angle Point		-2

NOTES:
DRAWINGS NOT TO BE USED FOR NAVIGATION. ONLY CHANNEL CONDITION AT DATE OF SURVEY.
THE LOCATION OF ALL NAVIGATION AIDS ARE BASED ON INFORMATION PROVIDED BY THE U.S. COAST GUARD. BUOY LOCATIONS REPRESENT THE POSITION OF THE SINKER ONLY.

SURVEYED BY THE CORPS OF ENGINEERS.

SOUNDINGS FOR ARE TAKEN BY FATHOMETER AND ARE SHOWN TO THE NEAREST FOOT AND TENTH OF A FOOT.

SOUNDINGS ARE BASED ON THE DATUM OF MEAN LOWER LOW WATER AT THE LOCALITY.

PLANE GRID AND COORDINATES ARE BASED ON LAMBERT PROJECTION, ZONE III NAD 83, CALIFORNIA, AS DESCRIBED IN SPECIAL PUBLICATION NO. 236, PUBLISHED BY NATIONAL OCEAN SURVEY.

THE PROJECT DEPTH IS 5 FEET.

HORIZONTAL CONTROL: DESIGNATION, SOURCE, XYZ COAST GUARD D-BEACON

VERTICAL CONTROL: BENCHMARK, MLLW ELEV., AGENCY B.M. TIDAL 17 (1951), USCGS DISK, 9.73 MLLW HARBOR ST. PUMPHOUSE, EAST FRANCISCO BLVD. B.M. L 551 (1956), USCGS DISK, 15.61 MLLW SAN RAFAEL SANITARY DIST. PUMPHOUSE, PT. SAN PEDRO RD.

TIDE GAGE LOCATION: SAN RAFAEL YACHT HARBOR & MARIN YACHT HARBOR
STA. 119+00 TO 150+00 ... Marin Yacht Harbor
STA. 150+00 TO 200+00 ... San Rafael Yacht Harbor
FLOOD ⇒ SLACK ⇒ EBB TIDE SURVEY 5.2 Ft ⇒ 6.4 Ft.

US Army Corps of Engineers
San Francisco District
450 Market Street
San Francisco, CA 94102

DISCLAIMER: The United States Government furnishes these data to others without also transferring this Disclaimer. The recipient may not transfer these data to others without also transferring this Disclaimer.

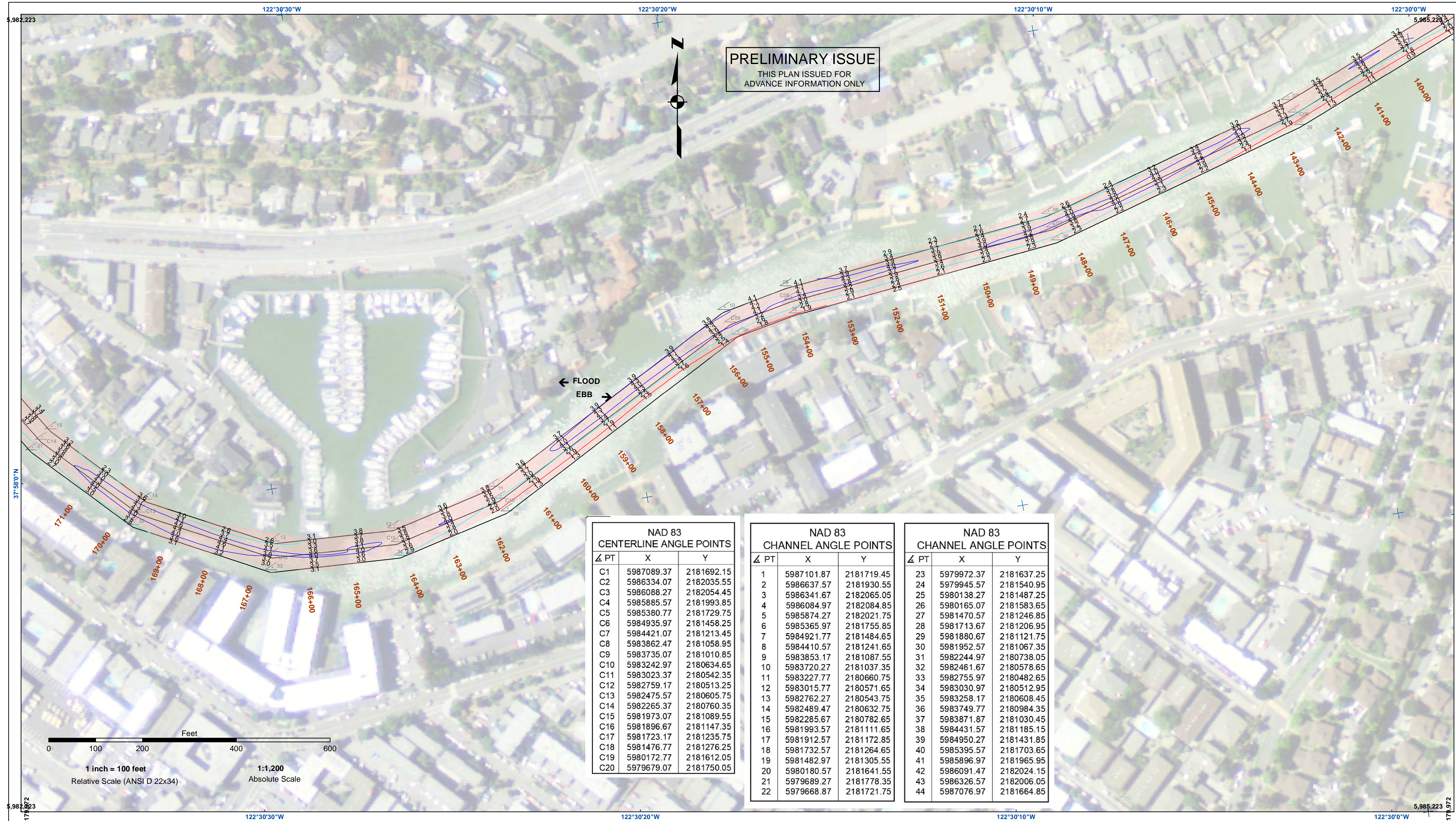
Access Constraints: The United States Government furnishes these data to others without also transferring this Disclaimer. The recipient may not transfer these data to others without also transferring this Disclaimer.

Distribution Liability: The data represents the results of data collection and processing activities. The data is not intended for navigation. The user is responsible for the results of any application of the data for other than its intended purpose.

Chart Date:	Jul 13, 2022
Designed by:	
Drawn by:	PDT
Surveyed By:	KEVIN P. ARNETT
Plotted By:	PDT
Checked By:	PDT

CALIFORNIA
MARIN COUNTY
SAN RAFAEL CREEK
CONDITION SURVEY
24 JUNE 2022

Sheet Reference Number
1 of 3

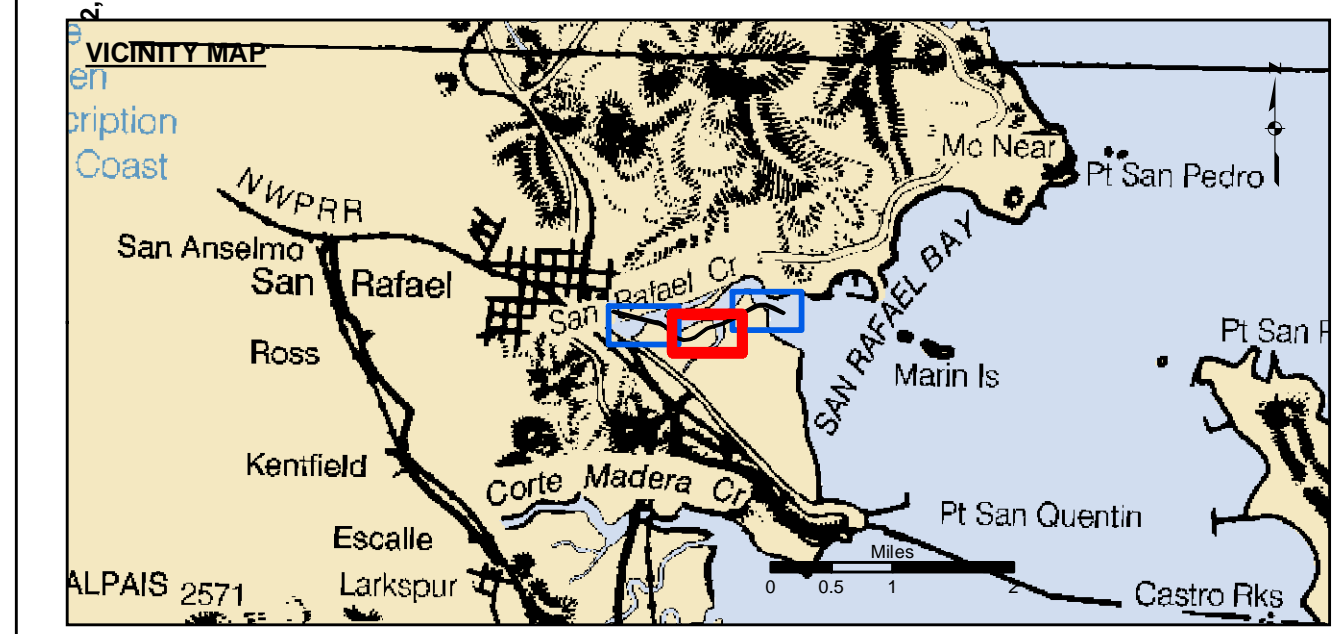


PRELIMINARY ISSUE
THIS PLAN ISSUED FOR
ADVANCE INFORMATION ONLY

NAD 83 CENTERLINE ANGLE POINTS		
△ PT	X	Y
C1	5987089.37	2181692.15
C2	5986334.07	2182035.55
C3	5986088.27	2182054.45
C4	5985885.57	2181993.85
C5	5985380.77	2181729.75
C6	5984935.97	2181458.25
C7	5984421.07	2181213.45
C8	5983862.47	2181058.95
C9	5983735.07	2181010.85
C10	5983242.97	2180634.65
C11	5983023.37	2180542.35
C12	5982759.17	2180513.25
C13	5982475.57	2180605.75
C14	5982265.37	2180760.35
C15	5981973.07	2181089.55
C16	5981896.67	2181147.35
C17	5981723.17	2181235.75
C18	5981476.77	2181276.25
C19	5980172.77	2181612.05
C20	5979679.07	2181750.05

NAD 83 CHANNEL ANGLE POINTS		
△ PT	X	Y
1	5987101.87	2181719.45
2	5986637.57	2181930.55
3	5986341.67	2182065.05
4	5986084.97	2182084.85
5	5985874.27	2182021.75
6	5985365.97	2181755.85
7	5984921.77	2181484.65
8	5984410.57	2181241.65
9	5983853.17	2181087.55
10	5983720.27	2181037.35
11	5983227.77	2180660.75
12	5983015.77	2180571.65
13	5982762.27	2180543.75
14	5982489.47	2180632.75
15	5982285.67	2180782.65
16	5981993.57	2181111.65
17	5981912.57	2181172.85
18	5981732.57	2181264.65
19	5981482.97	2181305.55
20	5980180.57	2181641.55
21	5979689.27	2181778.35
22	5979668.87	2181721.75

NAD 83 CHANNEL ANGLE POINTS		
△ PT	X	Y
23	5979972.37	2181637.25
24	5979945.57	2181540.95
25	5980138.27	2181487.25
26	5980165.07	2181583.65
27	5981470.57	2181246.85
28	5981713.67	2181206.95
29	5981880.67	2181121.75
30	5981952.57	2181067.35
31	5982244.97	2180738.05
32	5982461.67	2180578.65
33	5982755.97	2180482.65
34	5983030.97	2180512.95
35	5983258.17	2180608.45
36	5983749.77	2180984.35
37	5983871.87	2181030.45
38	5984431.57	2181185.15
39	5984950.27	2181431.85
40	5985395.57	2181703.65
41	5985896.97	2181965.95
42	5986091.47	2182024.15
43	5986326.57	2182006.05
44	5987076.97	2181664.85



Federal Navigation Channel	Beacon, General	Contours
Shoaling Area	Obstruction Point	
Placement Area	Navigation Buoy	-6
Anchorage Area	Navigation Buoy	-5
Wreck Area	Shoalest Sounding*	-4
Submerged Wreck		-3
Angle Point		-2

NOTES:
DRAWINGS NOT TO BE USED FOR NAVIGATION. ONLY CHANNEL CONDITION AT DATE OF SURVEY.
THE LOCATION OF ALL NAVIGATION AIDS ARE BASED ON INFORMATION PROVIDED BY THE U.S. COAST GUARD. BUOY LOCATIONS REPRESENT THE POSITION OF THE SINKER ONLY.

SURVEYED BY THE CORPS OF ENGINEERS.

SOUNDINGS FOR ARE TAKEN BY FATHOMETER AND ARE SHOWN TO THE NEAREST FOOT AND TENTH OF A FOOT.

SOUNDINGS ARE BASED ON THE DATUM OF MEAN LOWER LOW WATER AT THE LOCALITY.

PLANE GRID AND COORDINATES ARE BASED ON LAMBERT PROJECTION, ZONE III NAD 83, CALIFORNIA, AS DESCRIBED IN SPECIAL PUBLICATION NO. 235, PUBLISHED BY NATIONAL OCEAN SURVEY.

THE PROJECT DEPTH IS 5 FEET.

HORIZONTAL CONTROL: DESIGNATION, SOURCE, XYZ COAST GUARD D-BEACON

VERTICAL CONTROL: BENCHMARK, MLLW ELEV., AGENCY B.M. TIDAL 17 (1951), USCGS DISK, 9.73 MLLW HARBOR ST. PUMPHOUSE, EAST FRANCISCO BLVD. B.M. L 551 (1956), USCGS DISK, 15.61 MLLW SAN RAFAEL SANITARY DIST. PUMPHOUSE, PT. SAN PEDRO RD.

TIDE GAGE LOCATION: SAN RAFAEL YACHT HARBOR & MARIN YACHT HARBOR
STA. 119+00 TO 150+00 ... Marin Yacht Harbor
STA. 150+00 TO 200+00 ... San Rafael Yacht Harbor
FLOOD => SLACK => EBB TIDE SURVEY 5.2 FT => 6.4 FT.

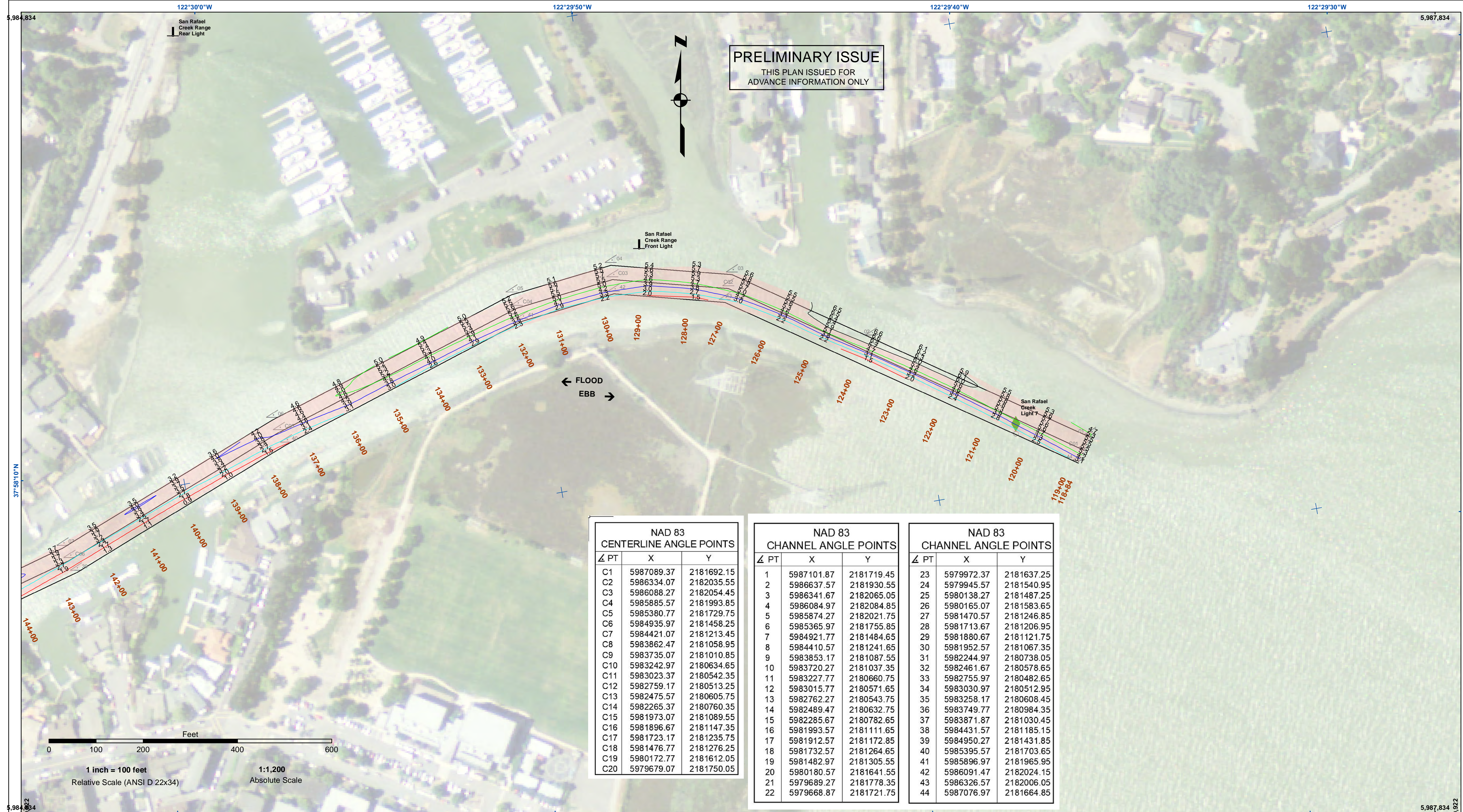
US Army Corps of Engineers
San Francisco District
450 Market Street
San Francisco, CA 94102

DISCLAIMER
The United States Government furnishes the data represented by this drawing for the purpose of providing advance information only. The data represents the results of data collected by the United States Government and is not intended for use in any other manner. The user is responsible for the results of any application of the data for other than its intended purpose. The United States Government makes no warranty, expressed or implied, concerning the accuracy, completeness, or reliability of the data. The United States Government is not liable for any damage or loss, including consequential damages, arising from the use of the data for other than its intended purpose. The recipient may not transfer these data to others without also transferring this Disclaimer.

Prepared Under the Direction of:	Chart Date:
KEVIN P. ARNETT	Jul 13, 2022
LT Colonel, C.E., District Engineer	Designed by:
Subproject: PDT	Plotted by:
Hydro Survey Team Leader	Checked by:
Chief, Hydro Survey Section	Drawn by:
Approved: PDT	PDT

CALIFORNIA
MARIN COUNTY
SAN RAFAEL CREEK
CONDITION SURVEY
24 JUNE 2022

Sheet
Reference
Number
2 of 3

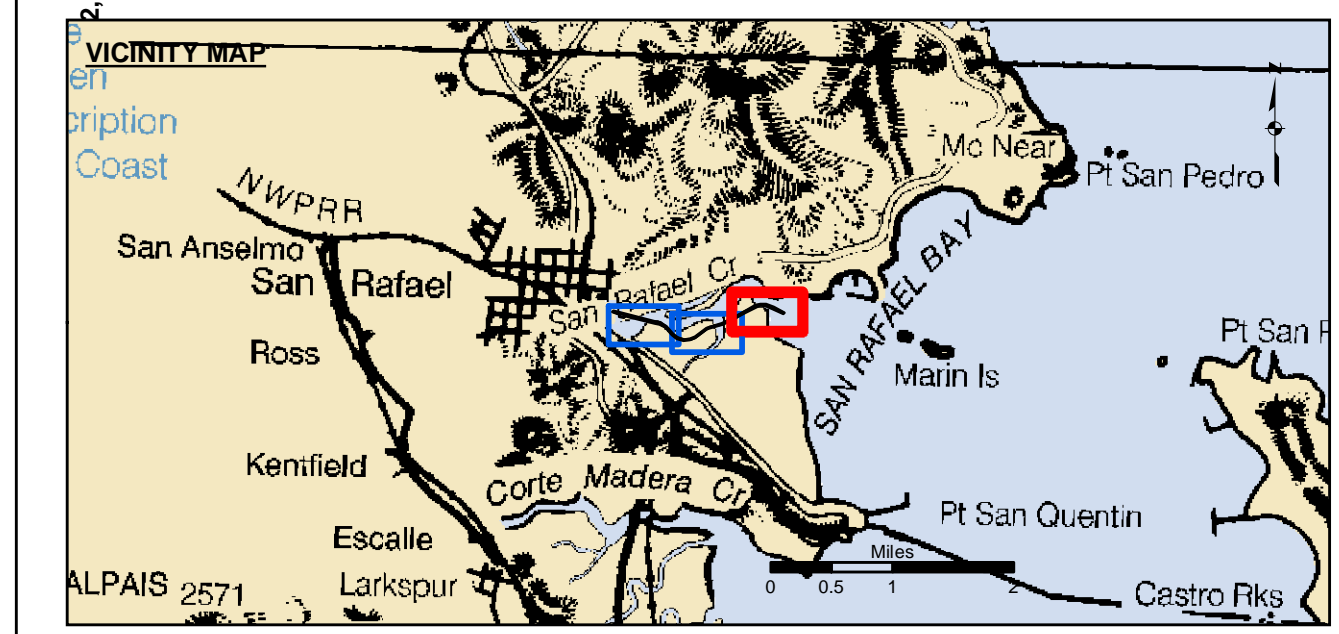
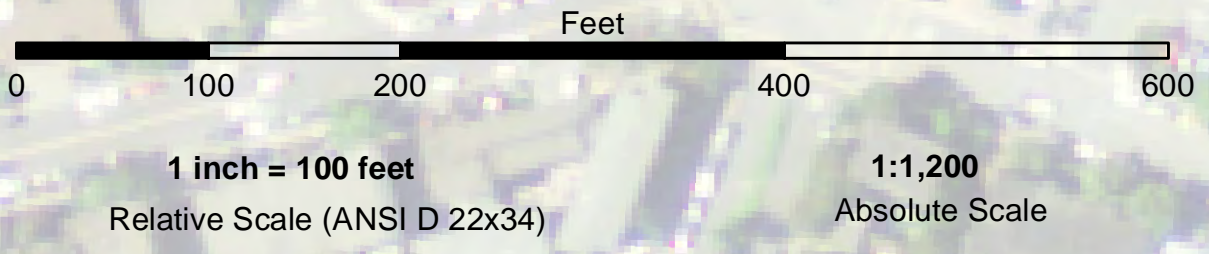


PRELIMINARY ISSUE
THIS PLAN ISSUED FOR
ADVANCE INFORMATION ONLY

NAD 83 CENTERLINE ANGLE POINTS		
Δ PT	X	Y
C1	5987089.37	2181692.15
C2	5986334.07	2182035.55
C3	5986088.27	2182054.45
C4	5985885.57	2181993.85
C5	5985380.77	2181729.75
C6	5984935.97	2181458.25
C7	5984421.07	2181213.45
C8	5983862.47	2181058.95
C9	5983735.07	2181010.85
C10	5983242.97	2180634.65
C11	5983023.37	2180542.35
C12	5982759.17	2180513.25
C13	5982475.57	2180605.75
C14	5982265.37	2180760.35
C15	5981973.07	2181089.55
C16	5981896.67	2181147.35
C17	5981723.17	2181235.75
C18	5981476.77	2181276.25
C19	5980172.77	2181612.05
C20	5979679.07	2181750.05

NAD 83 CHANNEL ANGLE POINTS		
Δ PT	X	Y
1	5987101.87	2181719.45
2	5986637.57	2181930.55
3	5986341.67	2182065.05
4	5986084.97	2182084.85
5	5985874.27	2182021.75
6	5985365.97	2181755.85
7	5984921.77	2181484.65
8	5984410.57	2181241.65
9	5983853.17	2181087.55
10	5983720.27	2181037.35
11	5983227.77	2180660.75
12	5983015.77	2180571.65
13	5982762.27	2180543.75
14	5982489.47	2180632.75
15	5982285.67	2180782.65
16	5981993.57	2181111.65
17	5981912.57	2181172.85
18	5981732.57	2181264.65
19	5981482.97	2181305.55
20	5980180.57	2181641.55
21	5979689.27	2181778.35
22	5979668.87	2181721.75

NAD 83 CHANNEL ANGLE POINTS		
Δ PT	X	Y
23	5979972.37	2181637.25
24	5979945.57	2181540.95
25	5980138.27	2181487.25
26	5980165.07	2181583.65
27	5981470.57	2181246.85
28	5981713.67	2181206.95
29	5981880.67	2181121.75
30	5981952.57	2181067.35
31	5982244.97	2180738.05
32	5982461.67	2180578.65
33	5982755.97	2180482.65
34	5983030.97	2180512.95
35	5983258.17	2180608.45
36	5983749.77	2180984.35
37	5983871.87	2181030.45
38	5984431.57	2181185.15
39	5984950.27	2181431.85
40	5985395.57	2181703.65
41	5985896.97	2181965.95
42	5986091.47	2182024.15
43	5986326.57	2182006.05
44	5987076.97	2181664.85



Federal Navigation Channel	Beacon, General	Contours
Shoaling Area	Obstruction Point	
Placement Area	Navigation Buoy	-6
Anchorage Area	Navigation Buoy	-5
Wreck Area	Shoalest Sounding*	-4
Submerged Wreck		-3
Angle Point		-2

NOTES:
DRAWINGS NOT TO BE USED FOR NAVIGATION. ONLY CHANNEL CONDITION AT DATE OF SURVEY.
THE LOCATION OF ALL NAVIGATION AIDS ARE BASED ON INFORMATION PROVIDED BY THE U.S. COAST GUARD. BUOY LOCATIONS REPRESENT THE POSITION OF THE SINKER ONLY.
SURVEYED BY THE CORPS OF ENGINEERS.
SOUNDINGS FOR ARE TAKEN BY FATHOMETER AND ARE SHOWN TO THE NEAREST FOOT AND TENTH OF A FOOT.
SOUNDINGS ARE BASED ON THE DATUM OF MEAN LOWER LOW WATER AT THE LOCALITY.

PLANE GRID AND COORDINATES ARE BASED ON LAMBERT PROJECTION, ZONE III NAD 83, CALIFORNIA, AS DESCRIBED IN SPECIAL PUBLICATION NO. 235, PUBLISHED BY NATIONAL OCEAN SURVEY.
THE PROJECT DEPTH IS 5 FEET.
HORIZONTAL CONTROL: DESIGNATION, SOURCE, XYZ COAST GUARD D-BEACON
VERTICAL CONTROL: BENCHMARK, MLLW ELEV., AGENCY B.M. TIDAL 17 (1951), USCGS DISK, 9.73 MLLW HARBOR ST. PUMPHOUSE, EAST FRANCISCO BLVD. B.M. L 551 (1956), USCGS DISK, 15.61 MLLW SAN RAFAEL SANITARY DISK. PUMPHOUSE, PT. SAN PEDRO RD.
TIDE GAGE LOCATION: SAN RAFAEL YACHT HARBOR & MARIN YACHT HARBOR
STA. 119+00 TO 150+00 ... Marin Yacht Harbor
STA. 150+00 TO 200+00 ... San Rafael Yacht Harbor
FLOOD ⇒ SLACK ⇒ EBB TIDE SURVEY 5.2 FT ⇒ 6.4 FT.

US Army Corps of Engineers
San Francisco District
450 Market Street
San Francisco, CA 94102

DISCLAIMER: The data represents the results of data... Engineers activity and indicates the general existing conditions. As such, it is only valid for its intended use, content, time and accuracy specifications. The user is responsible for the results of any of the application of the data for other than its intended purpose. These data belong to the Government. Therefore the recipient may not transfer these data to others without also transferring this Disclaimer.

Prepared Under the Direction of:	Chart Date:
KEVIN P. ARNETT	Jul 13, 2022
LT Colonel, C.E., District Engineer	Designed by:
Submittal:	PDT
Hydro Survey Team Leader	Plotted by:
Recommended:	Checked by:
Chief, Hydro Survey Section	PDT
Approved:	Drawn by:
Chief, Construction Branch	PDT

CALIFORNIA
MARIN COUNTY
SAN RAFAEL CREEK
CONDITION SURVEY
24 JUNE 2022

Sheet
Reference
Number
3 of 3